



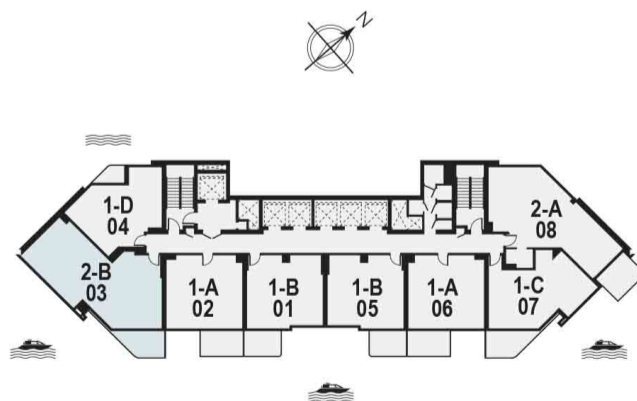
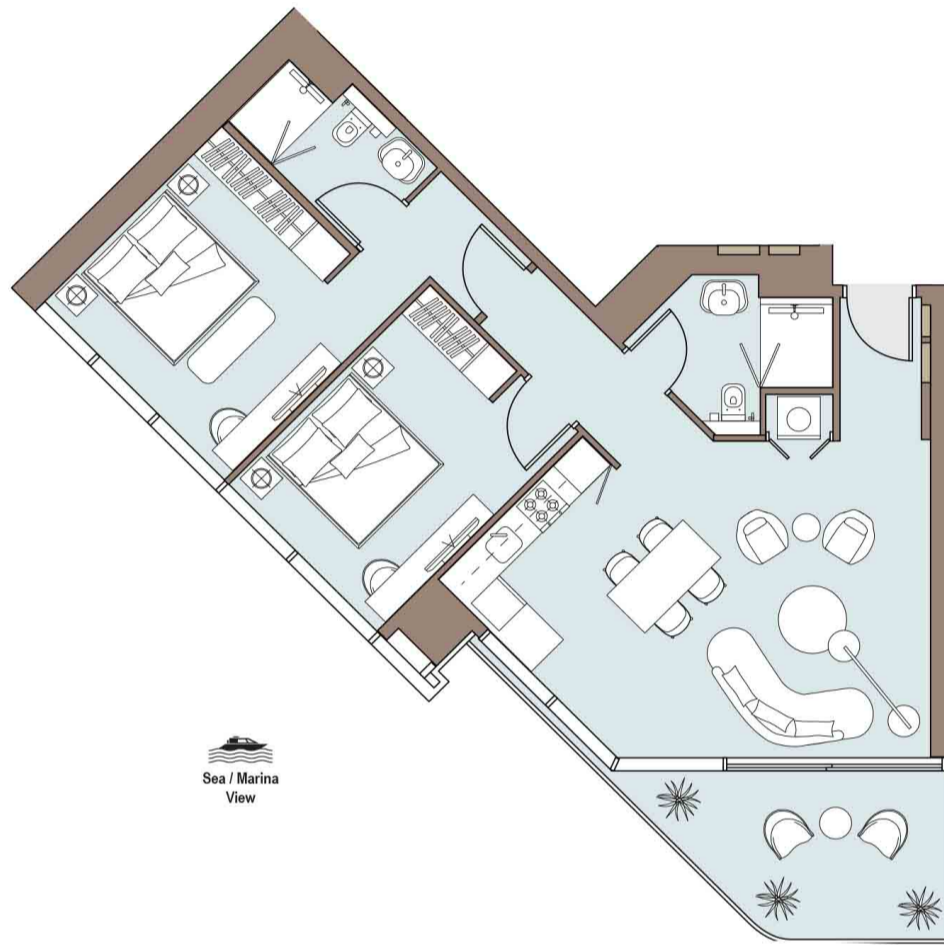
# Payment Plan



UNIT	VIEW	BEDROOMS	TYPE	UNIT AREA	INTERNAL AREA	EXTERNAL AREA	LIST PRICE (AED)	FURNISHED
N2-3203	Full Marina View	2		1,031.94	913.96	117.97	2,661,000.00	No
N2-3308	Marina View	2		1,000.18	884.36	115.82	2,522,000.00	No
N2-3403	Full Marina View	2		1,031.94	913.96	117.97	2,683,000.00	No
N2-3408	Marina View	2		1,000.18	884.36	115.82	2,532,000.00	No
N2-3703	Full Marina View	2		1,031.94	913.96	117.97	2,716,000.00	No
N2-3708	Marina View	2		1,000.18	884.36	115.82	2,564,000.00	No
N2-3803	Full Marina View	2		1,031.94	913.96	117.97	2,727,000.00	No
N2-3903	Full Marina View	2		1,031.94	913.96	117.97	2,738,000.00	No
N2-3908	Marina View	2		1,000.18	884.36	115.82	2,586,000.00	No
N2-4103	Full Marina View	2		1,031.94	913.96	117.97	2,760,000.00	No
N2-4108	Marina View	2		1,000.18	884.36	115.82	2,607,000.00	No
N2-4203	Full Marina View	2		1,031.94	913.96	117.97	2,771,000.00	No
N2-4208	Marina View	2		1,000.18	884.36	115.82	2,618,000.00	No
N2-4303	Full Marina View	2		1,031.94	913.96	117.97	2,783,000.00	No
N2-4308	Marina View	2		1,000.18	884.36	115.82	2,629,000.00	No
N2-4403	Full Marina View	2		1,031.94	913.96	117.97	2,794,000.00	No
N2-4408	Marina View	2		1,000.18	884.36	115.82	2,639,000.00	No
N2-4503	Full Marina View	2		1,031.94	913.96	117.97	2,804,000.00	No
N2-4603	Full Marina View	2		1,031.94	913.96	117.97	2,816,000.00	No
N2-4703	Full Marina View	2		1,031.94	913.96	117.97	2,827,000.00	No
N2-4803	Full Marina View	2		1,031.94	913.96	117.97	2,838,000.00	No

**TWO BEDROOM**

Tower Two | Type B | Unit 03  
Levels 7 - 24 & 26 - 48

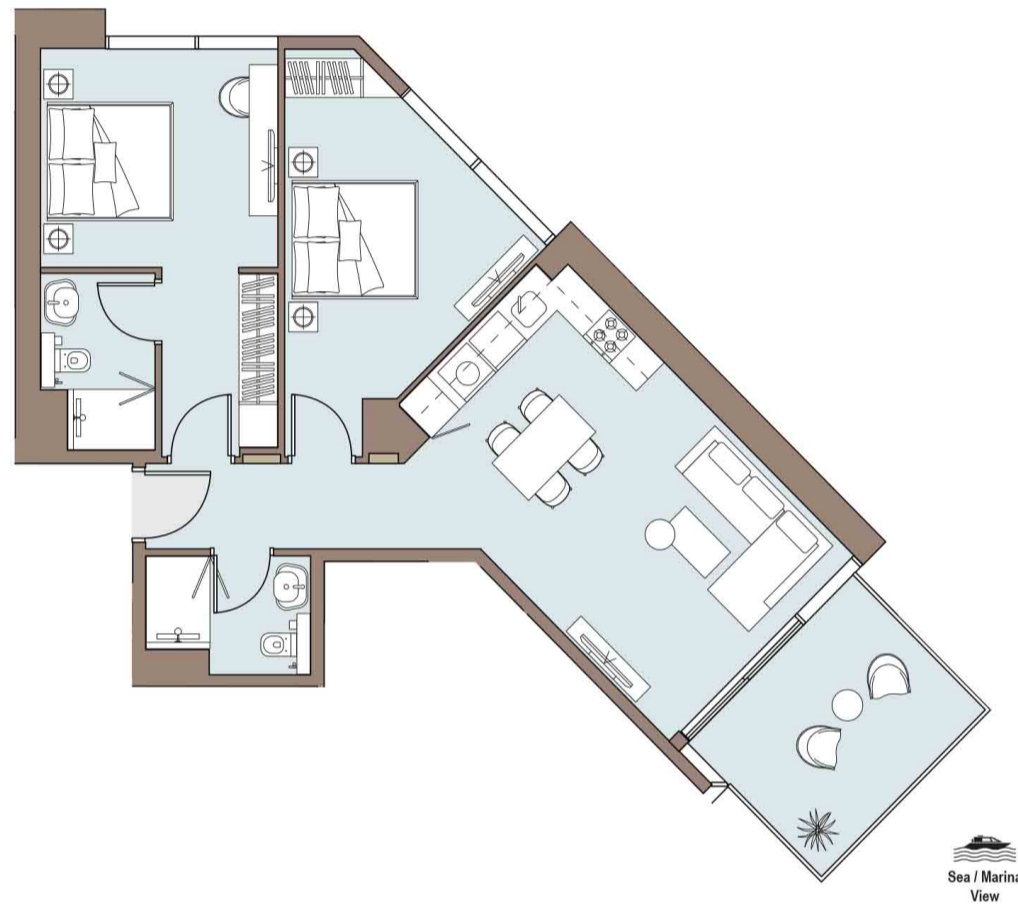


Apartment Area	84.91 m <sup>2</sup>	914 ft <sup>2</sup>
Balcony Area	10.96 m <sup>2</sup>	118 ft <sup>2</sup>
<b>Total Area</b>	<b>95.87 m<sup>2</sup></b>	<b>1,032 ft<sup>2</sup></b>

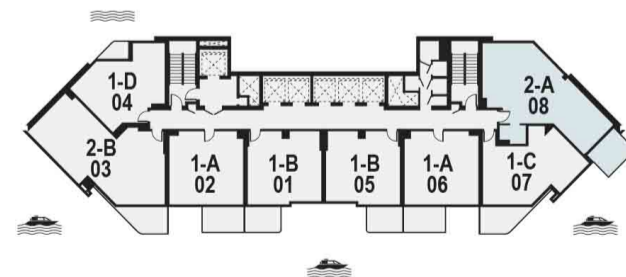
Drawings are provided by our consultants. All dimensions, features and amenities are approximate at time of printing. Actual size may vary from stated area. Drawings not to scale E & OE. The developer reserves the right to make revisions to the floor plans and any features, materials and dimensions mentioned without further notice.

**TWO BEDROOM**

Tower Two | Type A | Unit 08  
Levels 7 - 24 & 26 - 48



Sea / Marina  
View

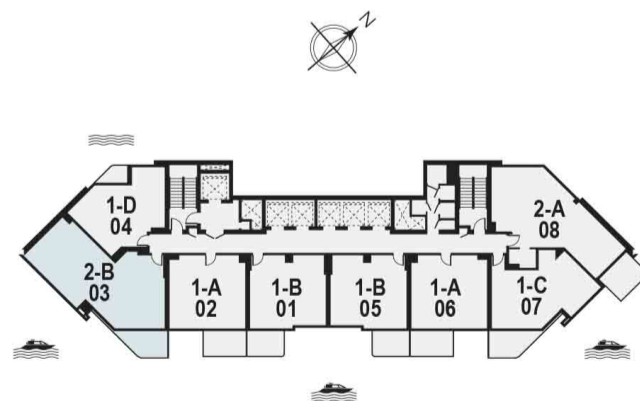
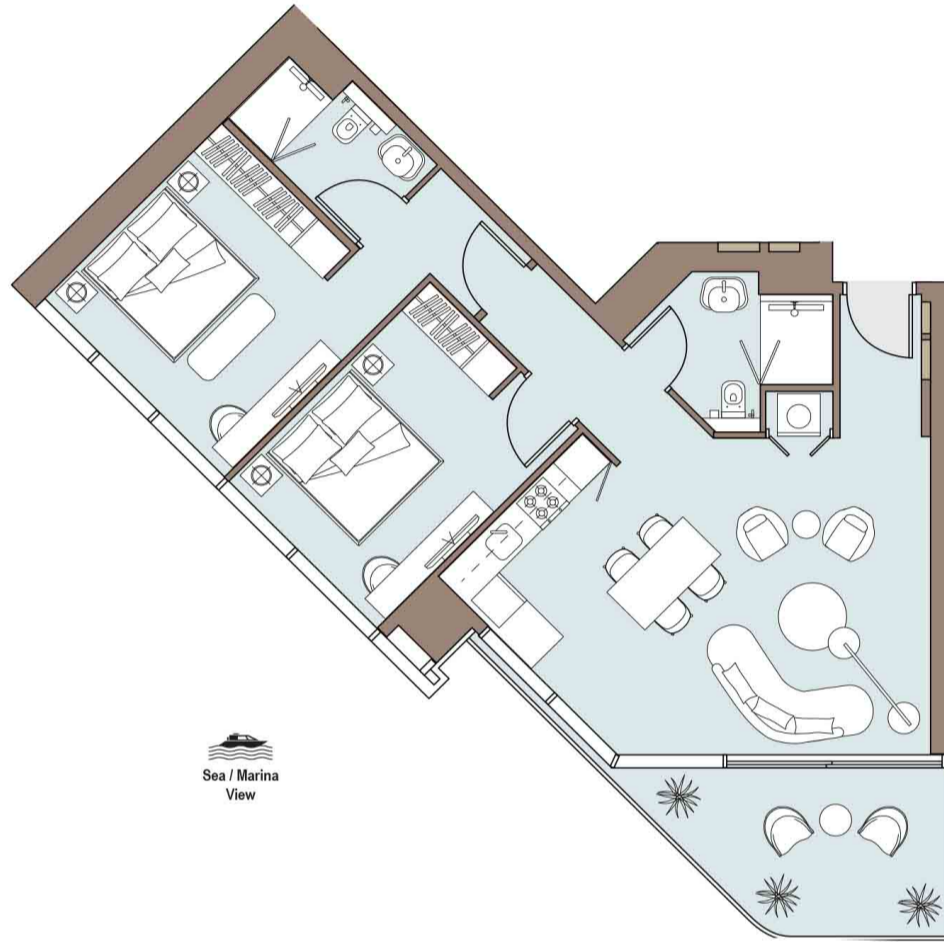


Apartment Area	82.16 m <sup>2</sup>	884 ft <sup>2</sup>
Balcony Area	10.76 m <sup>2</sup>	116 ft <sup>2</sup>
<b>Total Area</b>	<b>92.92 m<sup>2</sup></b>	<b>1,000 ft<sup>2</sup></b>

Drawings are provided by our consultants. All dimensions, features and amenities are approximate at time of printing. Actual size may vary from stated area. Drawings not to scale E & OE. The developer reserves the right to make revisions to the floor plans and any features, materials and dimensions mentioned without further notice.

**TWO BEDROOM**

Tower Two | Type B | Unit 03  
Levels 7 - 24 & 26 - 48

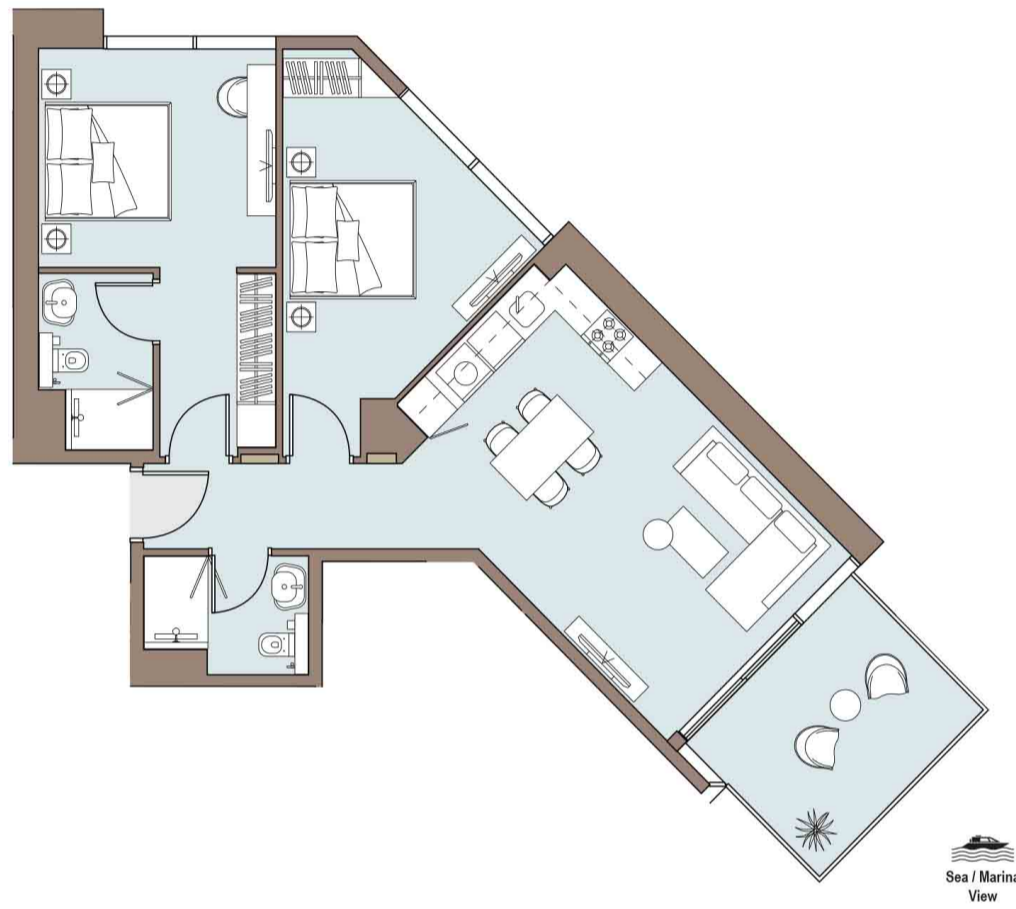


Apartment Area	84.91 m <sup>2</sup>	914 ft <sup>2</sup>
Balcony Area	10.96 m <sup>2</sup>	118 ft <sup>2</sup>
<b>Total Area</b>	<b>95.87 m<sup>2</sup></b>	<b>1,032 ft<sup>2</sup></b>

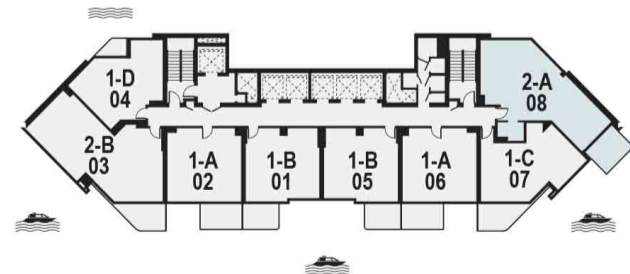
Drawings are provided by our consultants. All dimensions, features and amenities are approximate at time of printing. Actual size may vary from stated area. Drawings not to scale E & OE. The developer reserves the right to make revisions to the floor plans and any features, materials and dimensions mentioned without further notice.

**TWO BEDROOM**

Tower Two | Type A | Unit 08  
Levels 7 - 24 & 26 - 48



Sea / Marina  
View

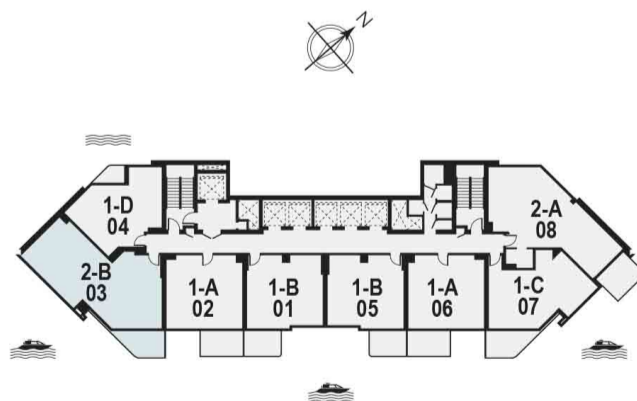
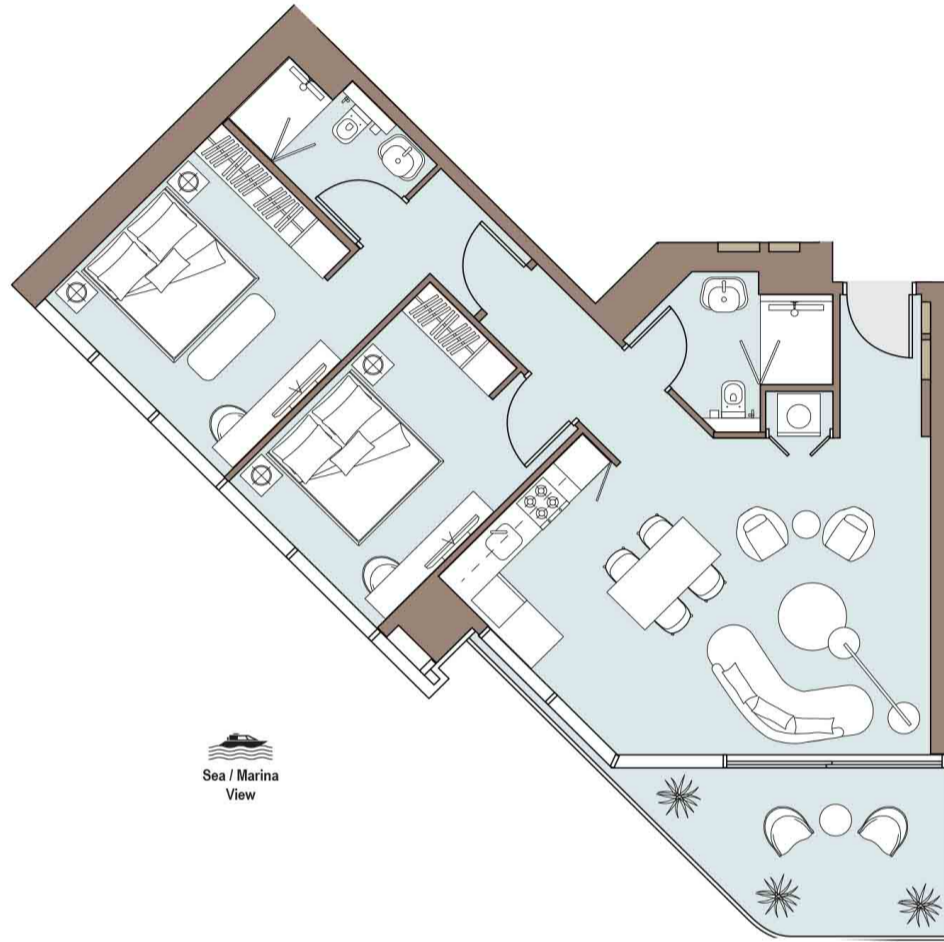


Apartment Area	82.16 m <sup>2</sup>	884 ft <sup>2</sup>
Balcony Area	10.76 m <sup>2</sup>	116 ft <sup>2</sup>
<b>Total Area</b>	<b>92.92 m<sup>2</sup></b>	<b>1,000 ft<sup>2</sup></b>

Drawings are provided by our consultants. All dimensions, features and amenities are approximate at time of printing. Actual size may vary from stated area. Drawings not to scale E & OE. The developer reserves the right to make revisions to the floor plans and any features, materials and dimensions mentioned without further notice.

**TWO BEDROOM**

Tower Two | Type B | Unit 03  
Levels 7 - 24 & 26 - 48



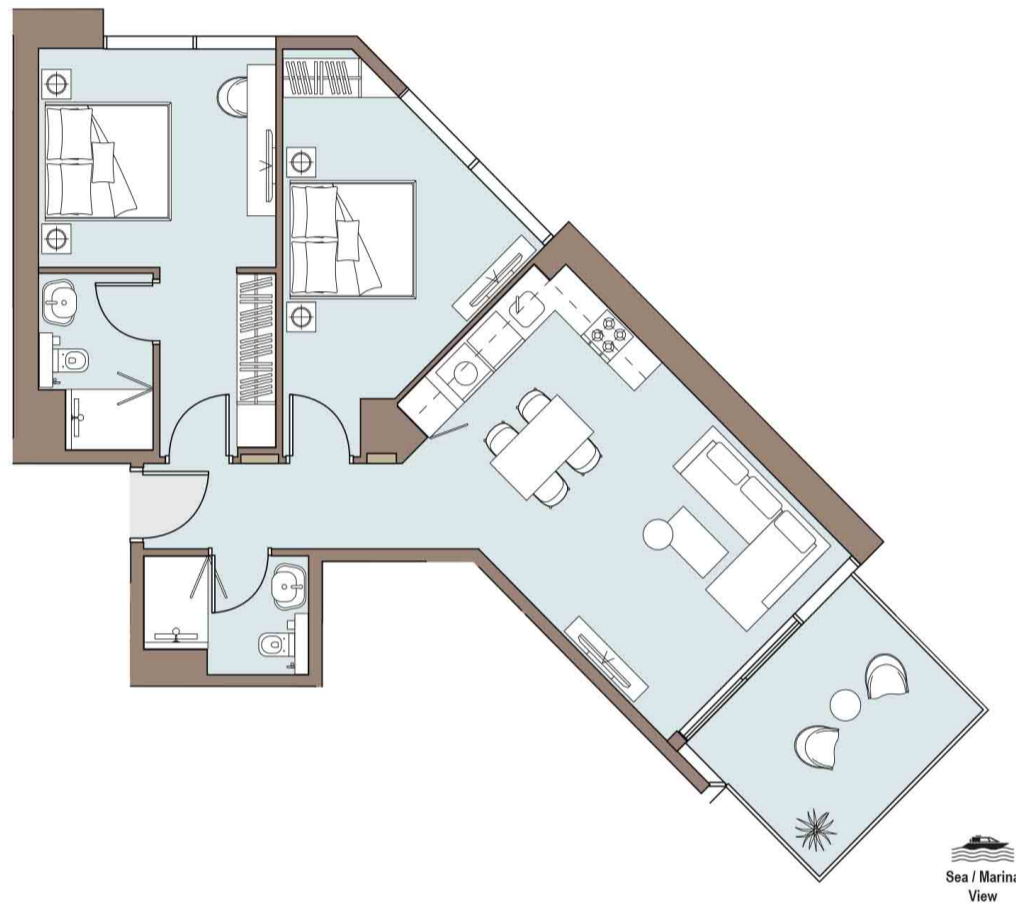
Apartment Area	84.91 m <sup>2</sup>	914 ft <sup>2</sup>
Balcony Area	10.96 m <sup>2</sup>	118 ft <sup>2</sup>
<b>Total Area</b>	<b>95.87 m<sup>2</sup></b>	<b>1,032 ft<sup>2</sup></b>

Drawings are provided by our consultants. All dimensions, features and amenities are approximate at time of printing. Actual size may vary from stated area. Drawings not to scale E & OE. The developer reserves the right to make revisions to the floor plans and any features, materials and dimensions mentioned without further notice.

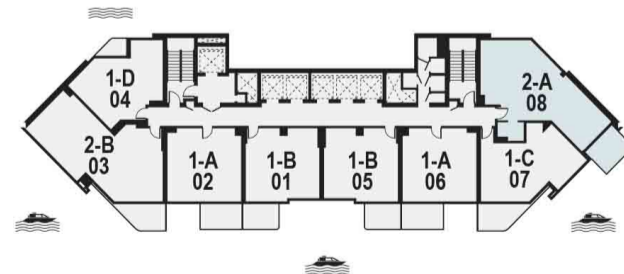


**TWO BEDROOM**

Tower Two | Type A | Unit 08  
Levels 7 - 24 & 26 - 48



Sea / Marina  
View

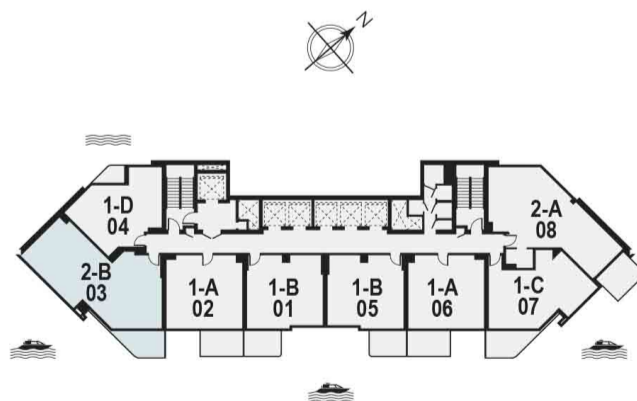
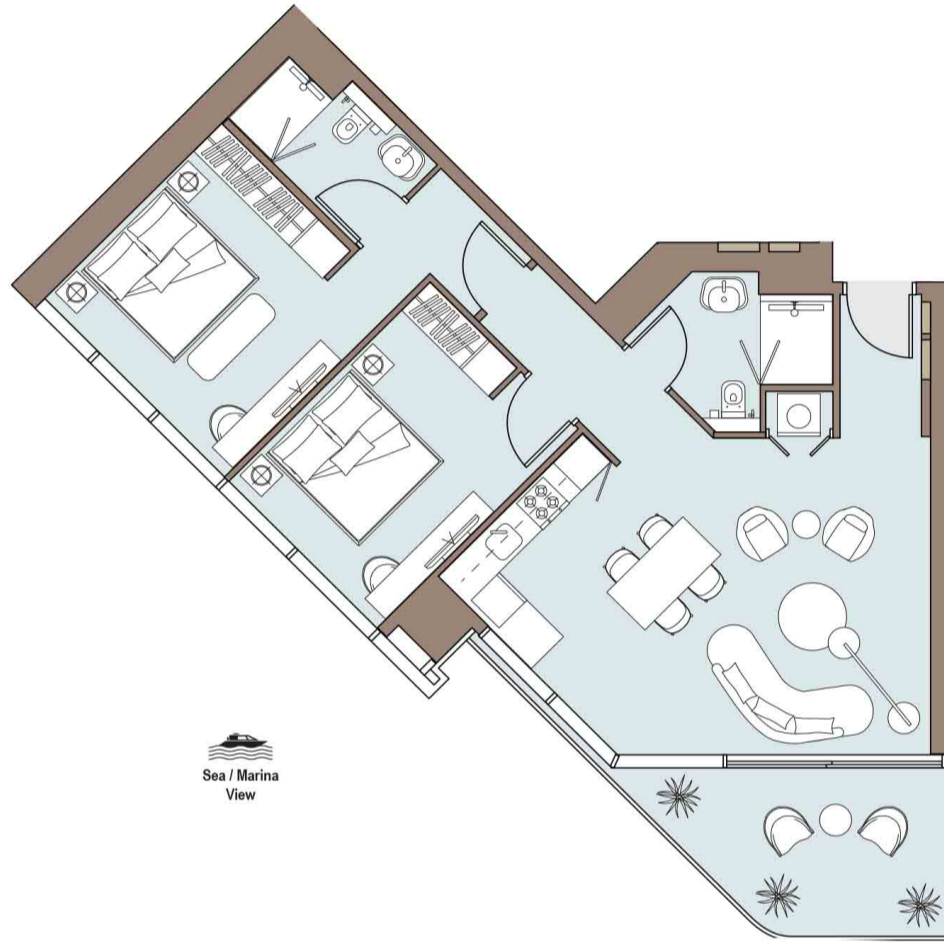


Apartment Area	82.16 m <sup>2</sup>	884 ft <sup>2</sup>
Balcony Area	10.76 m <sup>2</sup>	116 ft <sup>2</sup>
<b>Total Area</b>	<b>92.92 m<sup>2</sup></b>	<b>1,000 ft<sup>2</sup></b>

Drawings are provided by our consultants. All dimensions, features and amenities are approximate at time of printing. Actual size may vary from stated area. Drawings not to scale E & OE. The developer reserves the right to make revisions to the floor plans and any features, materials and dimensions mentioned without further notice.

**TWO BEDROOM**

Tower Two | Type B | Unit 03  
Levels 7 - 24 & 26 - 48

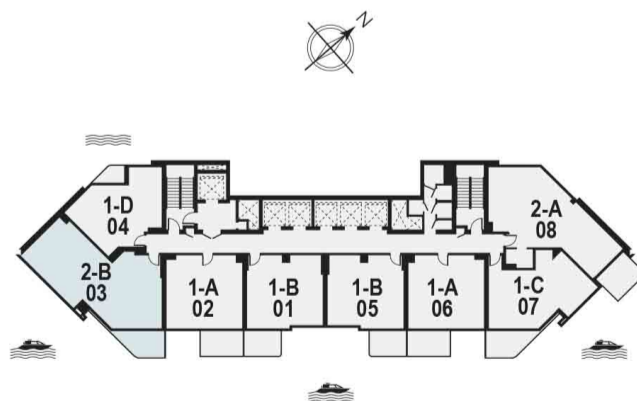
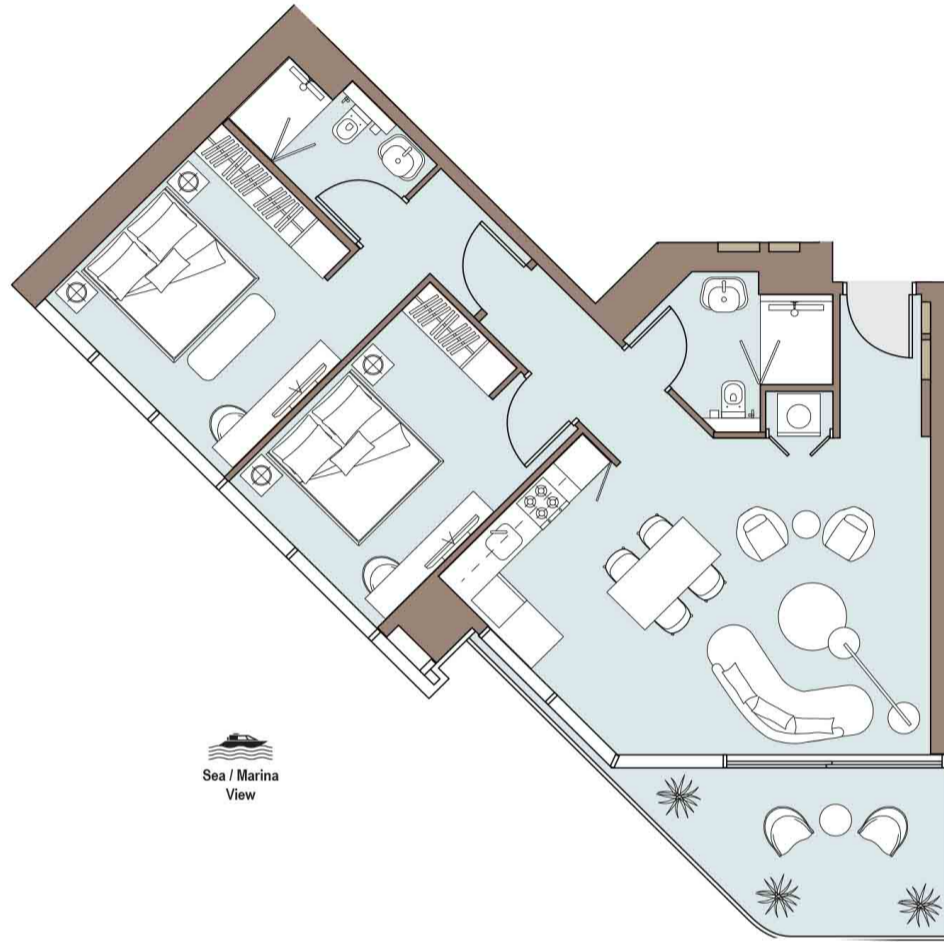


Apartment Area	84.91 m <sup>2</sup>	914 ft <sup>2</sup>
Balcony Area	10.96 m <sup>2</sup>	118 ft <sup>2</sup>
<b>Total Area</b>	<b>95.87 m<sup>2</sup></b>	<b>1,032 ft<sup>2</sup></b>

Drawings are provided by our consultants. All dimensions, features and amenities are approximate at time of printing. Actual size may vary from stated area. Drawings not to scale E & OE. The developer reserves the right to make revisions to the floor plans and any features, materials and dimensions mentioned without further notice.

**TWO BEDROOM**

Tower Two | Type B | Unit 03  
Levels 7 - 24 & 26 - 48

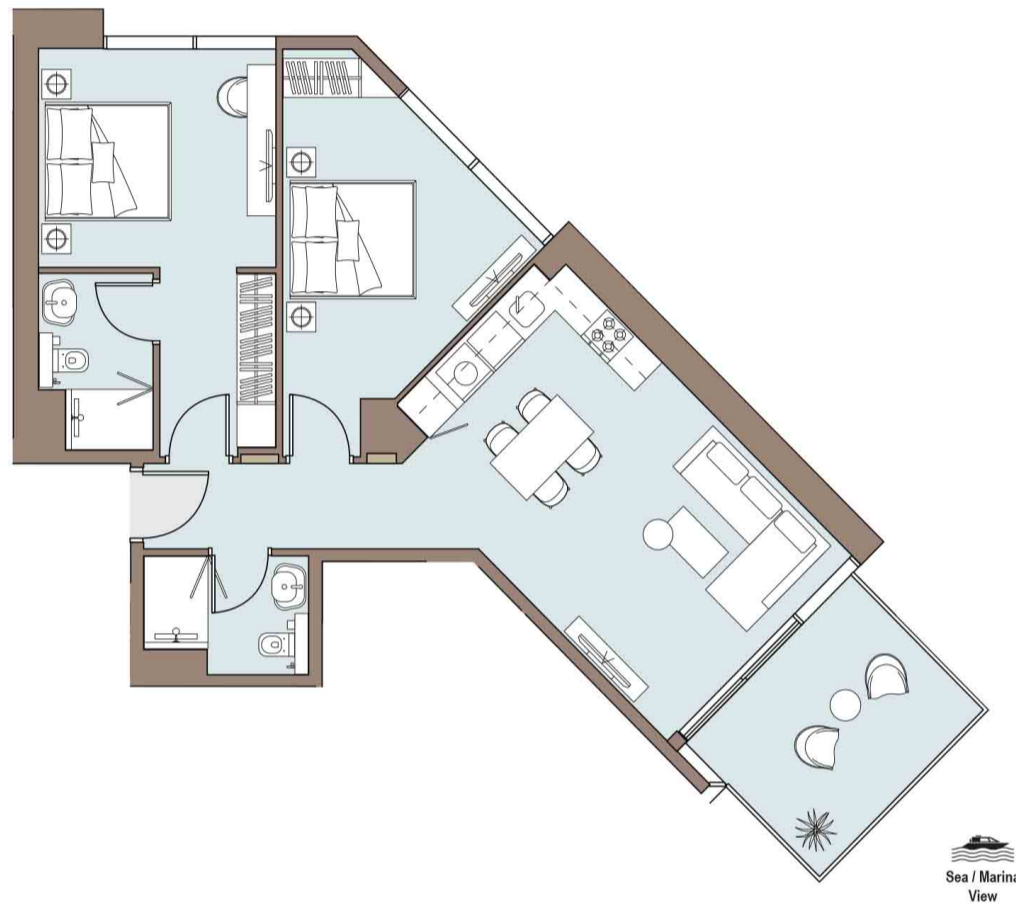


Apartment Area	84.91 m <sup>2</sup>	914 ft <sup>2</sup>
Balcony Area	10.96 m <sup>2</sup>	118 ft <sup>2</sup>
<b>Total Area</b>	<b>95.87 m<sup>2</sup></b>	<b>1,032 ft<sup>2</sup></b>

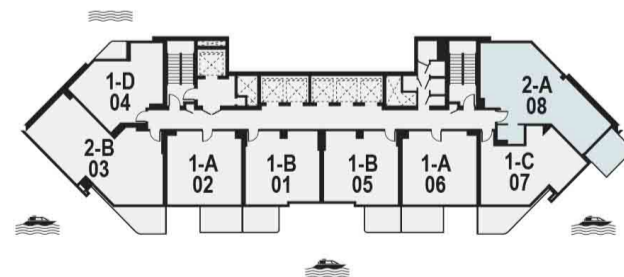
Drawings are provided by our consultants. All dimensions, features and amenities are approximate at time of printing. Actual size may vary from stated area. Drawings not to scale E & OE. The developer reserves the right to make revisions to the floor plans and any features, materials and dimensions mentioned without further notice.

**TWO BEDROOM**

Tower Two | Type A | Unit 08  
Levels 7 - 24 & 26 - 48



Sea / Marina  
View

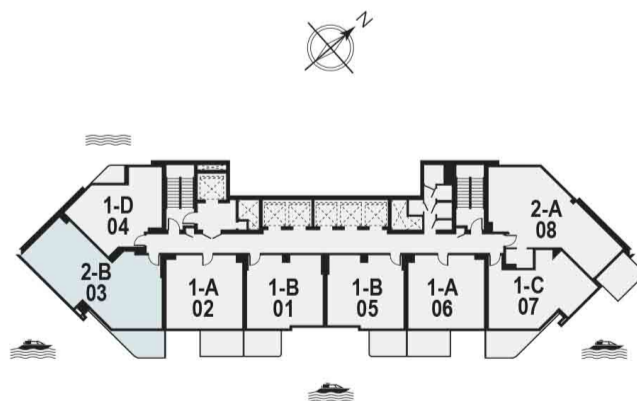
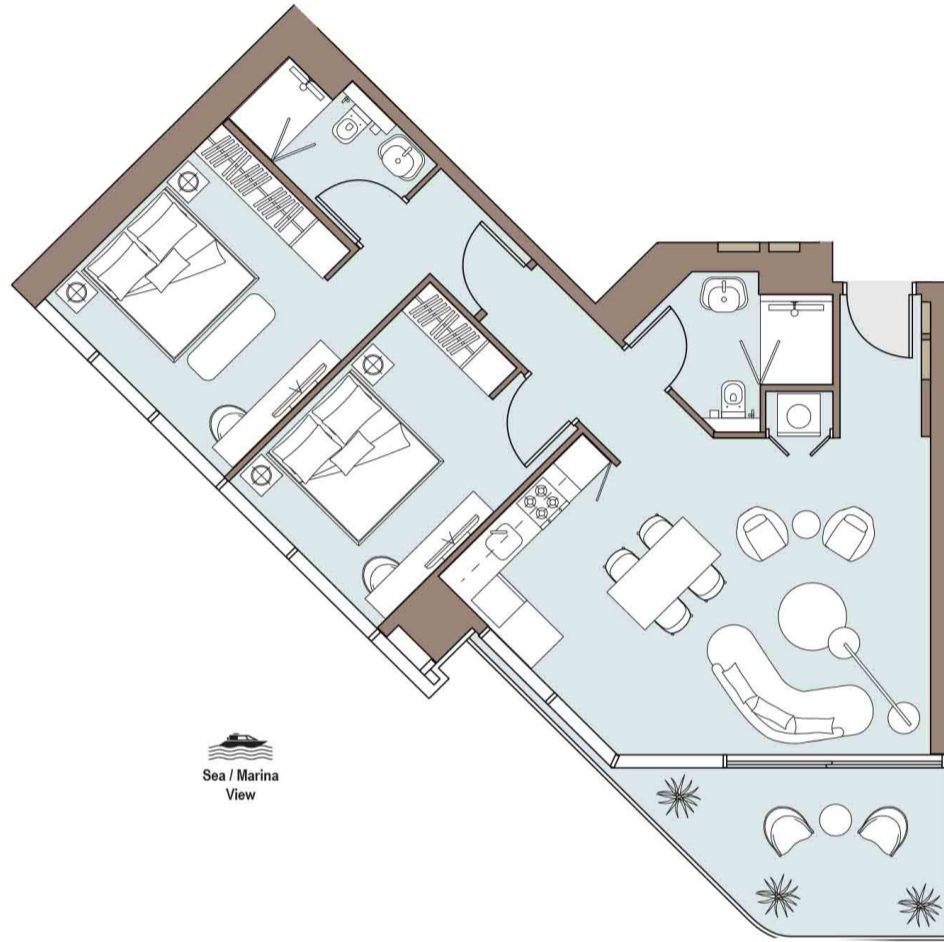


Apartment Area	82.16 m <sup>2</sup>	884 ft <sup>2</sup>
Balcony Area	10.76 m <sup>2</sup>	116 ft <sup>2</sup>
<b>Total Area</b>	<b>92.92 m<sup>2</sup></b>	<b>1,000 ft<sup>2</sup></b>

Drawings are provided by our consultants. All dimensions, features and amenities are approximate at time of printing. Actual size may vary from stated area. Drawings not to scale E & OE. The developer reserves the right to make revisions to the floor plans and any features, materials and dimensions mentioned without further notice.

**TWO BEDROOM**

Tower Two | Type B | Unit 03  
Levels 7 - 24 & 26 - 48

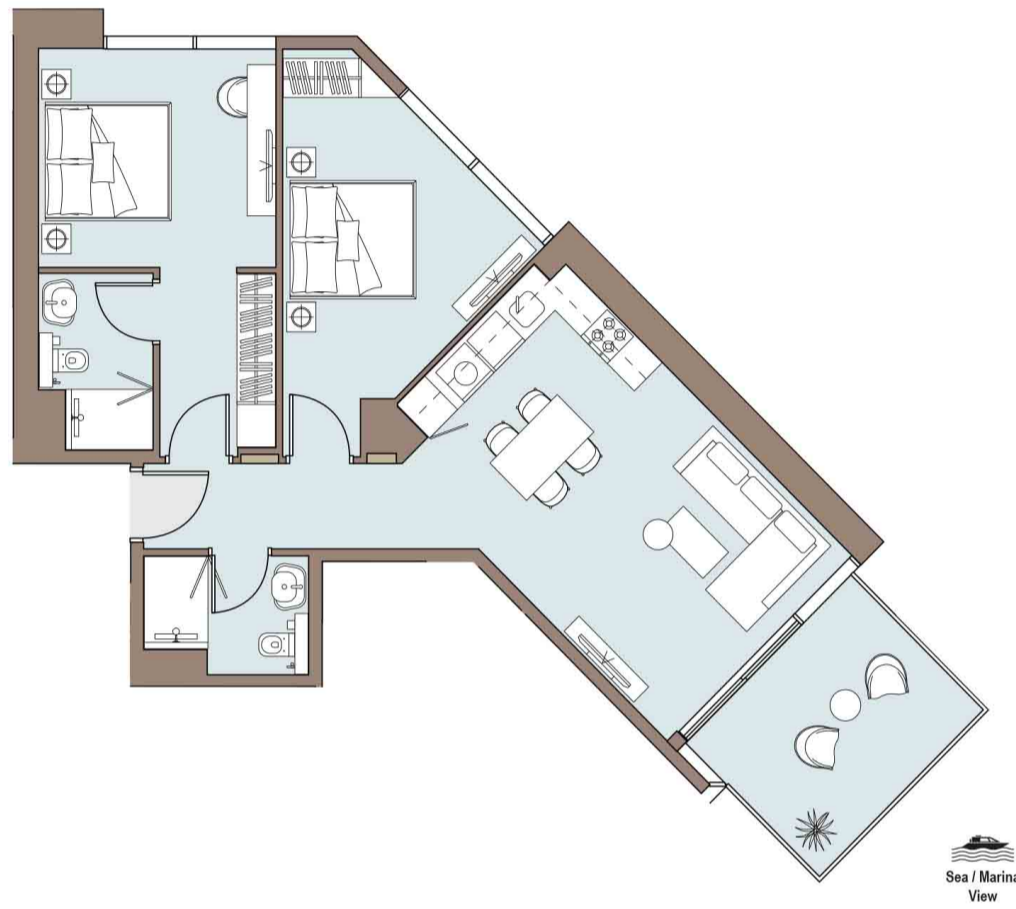


Apartment Area	84.91 m <sup>2</sup>	914 ft <sup>2</sup>
Balcony Area	10.96 m <sup>2</sup>	118 ft <sup>2</sup>
<b>Total Area</b>	<b>95.87 m<sup>2</sup></b>	<b>1,032 ft<sup>2</sup></b>

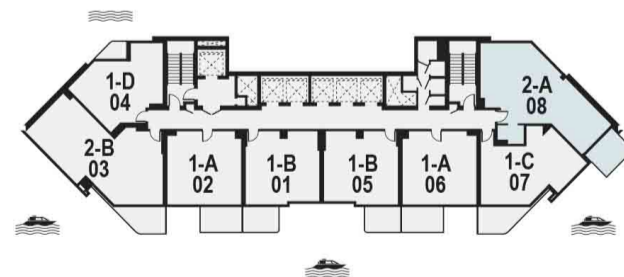
Drawings are provided by our consultants. All dimensions, features and amenities are approximate at time of printing. Actual size may vary from stated area. Drawings not to scale E & OE. The developer reserves the right to make revisions to the floor plans and any features, materials and dimensions mentioned without further notice.

**TWO BEDROOM**

Tower Two | Type A | Unit 08  
Levels 7 - 24 & 26 - 48



Sea / Marina  
View

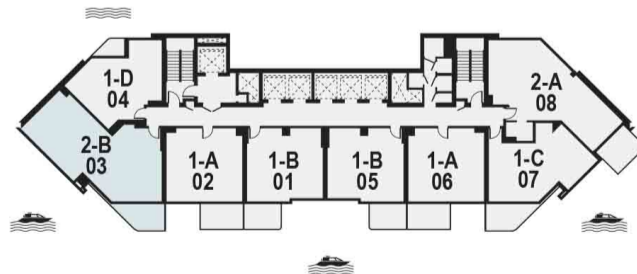
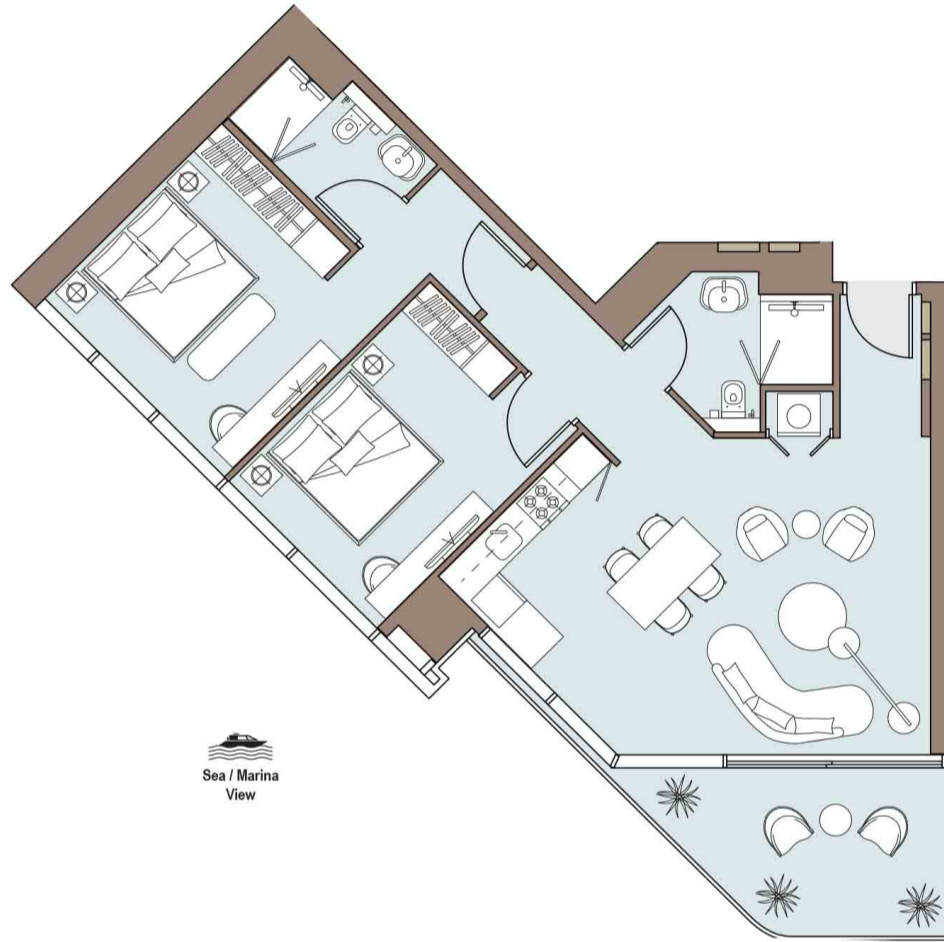


Apartment Area	82.16 m <sup>2</sup>	884 ft <sup>2</sup>
Balcony Area	10.76 m <sup>2</sup>	116 ft <sup>2</sup>
<b>Total Area</b>	<b>92.92 m<sup>2</sup></b>	<b>1,000 ft<sup>2</sup></b>

Drawings are provided by our consultants. All dimensions, features and amenities are approximate at time of printing. Actual size may vary from stated area. Drawings not to scale E & OE. The developer reserves the right to make revisions to the floor plans and any features, materials and dimensions mentioned without further notice.

**TWO BEDROOM**

Tower Two | Type B | Unit 03  
Levels 7 - 24 & 26 - 48

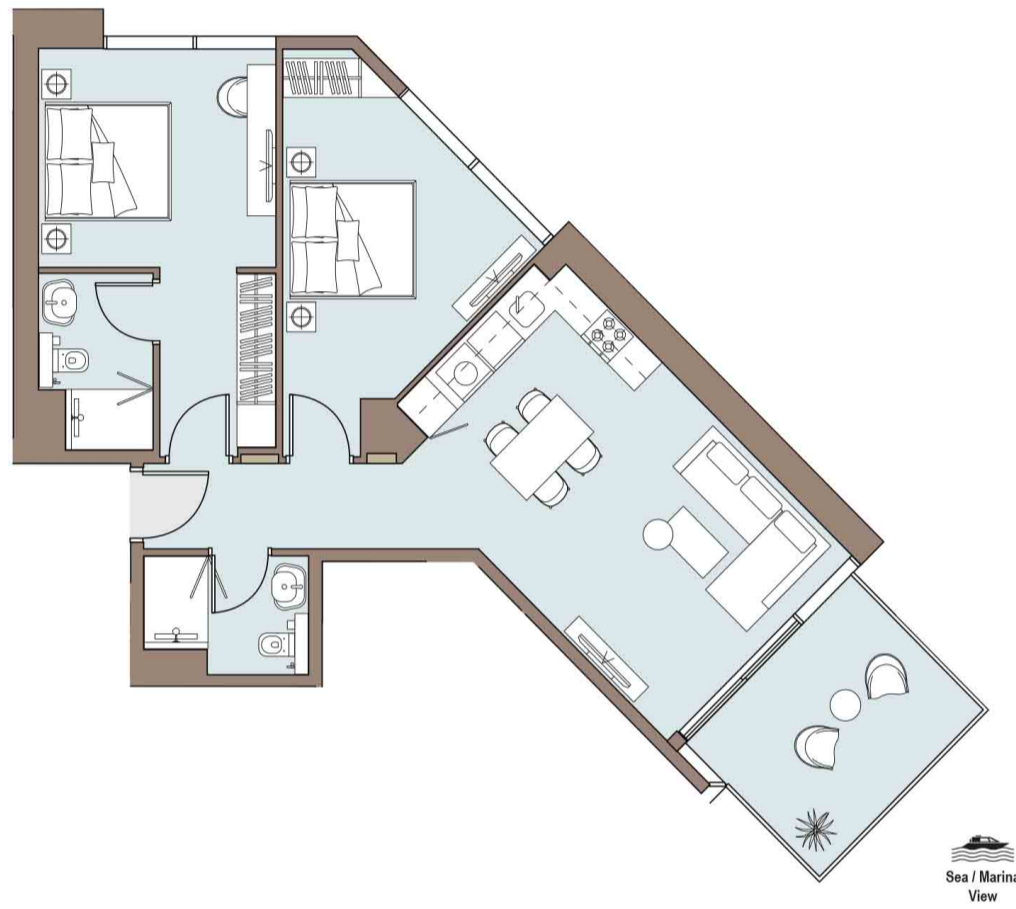


Apartment Area	84.91 m <sup>2</sup>	914 ft <sup>2</sup>
Balcony Area	10.96 m <sup>2</sup>	118 ft <sup>2</sup>
<b>Total Area</b>	<b>95.87 m<sup>2</sup></b>	<b>1,032 ft<sup>2</sup></b>

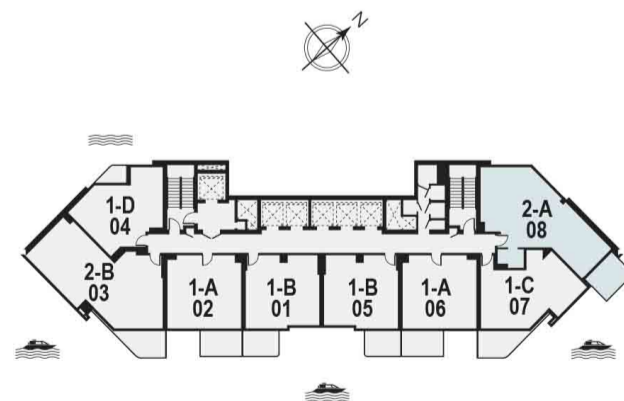
Drawings are provided by our consultants. All dimensions, features and amenities are approximate at time of printing. Actual size may vary from stated area. Drawings not to scale E & OE. The developer reserves the right to make revisions to the floor plans and any features, materials and dimensions mentioned without further notice.

**TWO BEDROOM**

Tower Two | Type A | Unit 08  
Levels 7 - 24 & 26 - 48



Apartment Area	82.16 m <sup>2</sup>	884 ft <sup>2</sup>
Balcony Area	10.76 m <sup>2</sup>	116 ft <sup>2</sup>
<b>Total Area</b>	<b>92.92 m<sup>2</sup></b>	<b>1,000 ft<sup>2</sup></b>

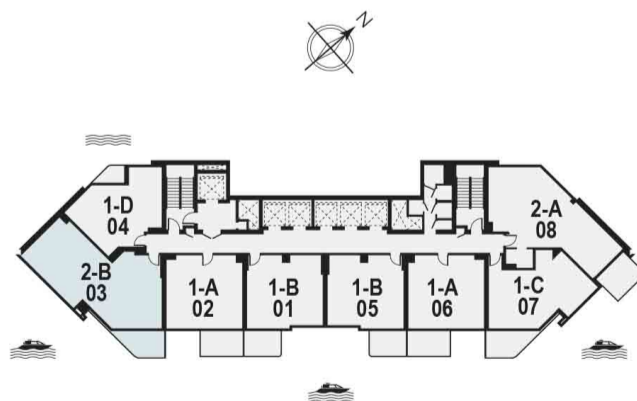
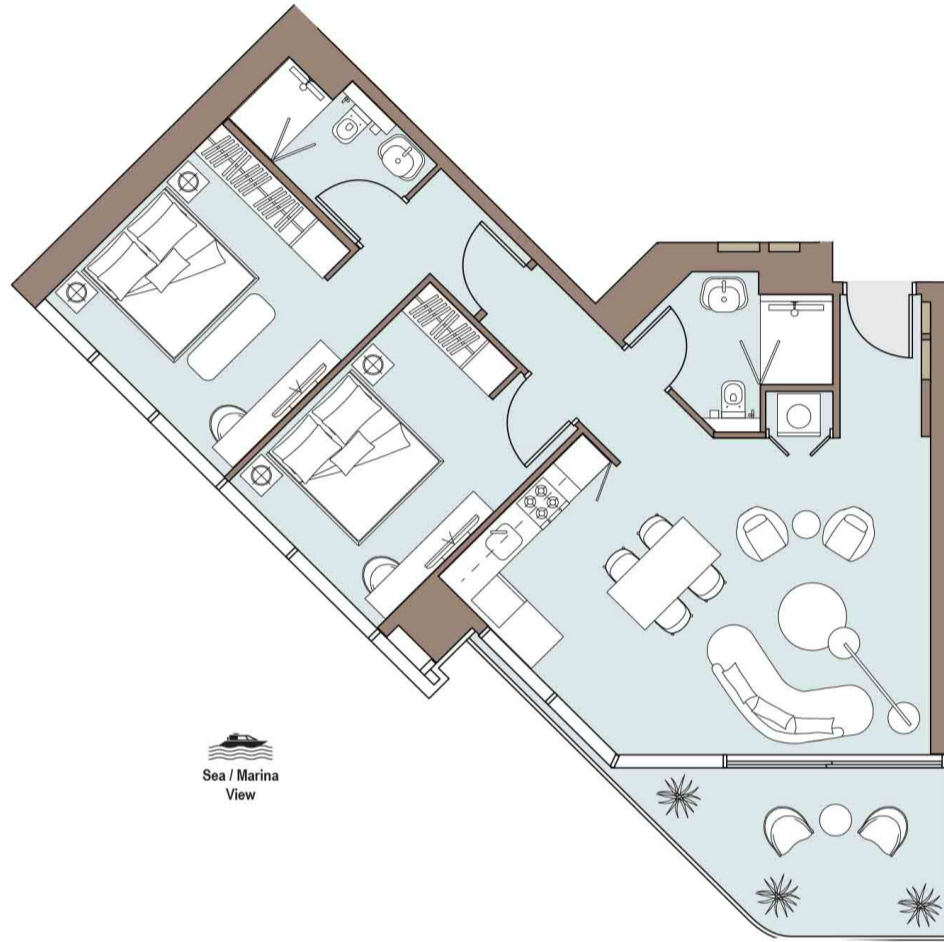


Drawings are provided by our consultants. All dimensions, features and amenities are approximate at time of printing. Actual size may vary from stated area. Drawings not to scale E & OE. The developer reserves the right to make revisions to the floor plans and any features, materials and dimensions mentioned without further notice.



**TWO BEDROOM**

Tower Two | Type B | Unit 03  
Levels 7 - 24 & 26 - 48

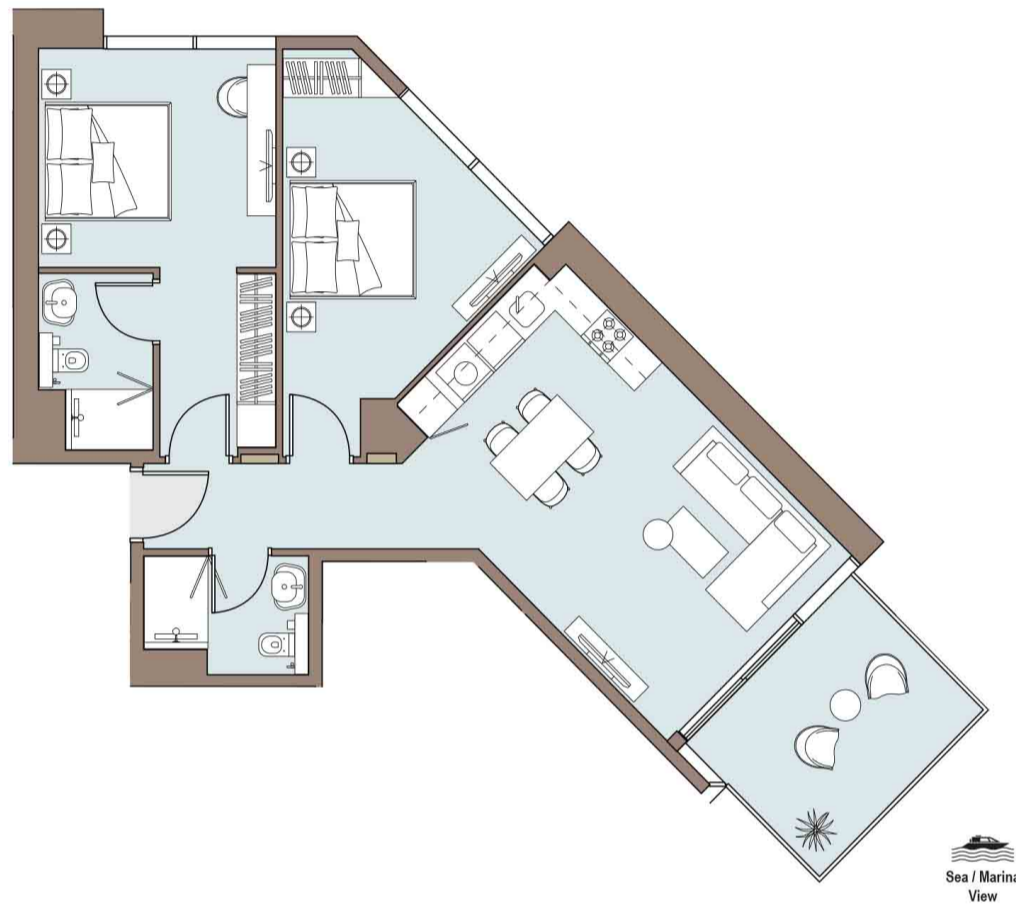


Apartment Area	84.91 m <sup>2</sup>	914 ft <sup>2</sup>
Balcony Area	10.96 m <sup>2</sup>	118 ft <sup>2</sup>
<b>Total Area</b>	<b>95.87 m<sup>2</sup></b>	<b>1,032 ft<sup>2</sup></b>

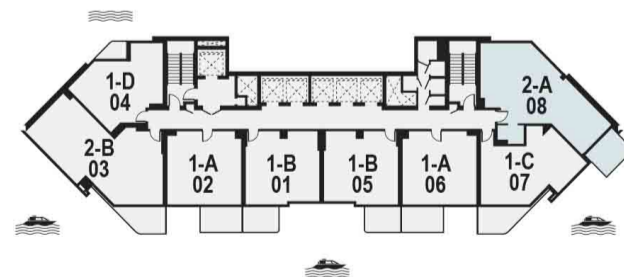
Drawings are provided by our consultants. All dimensions, features and amenities are approximate at time of printing. Actual size may vary from stated area. Drawings not to scale E & OE. The developer reserves the right to make revisions to the floor plans and any features, materials and dimensions mentioned without further notice.

**TWO BEDROOM**

Tower Two | Type A | Unit 08  
Levels 7 - 24 & 26 - 48



Sea / Marina  
View

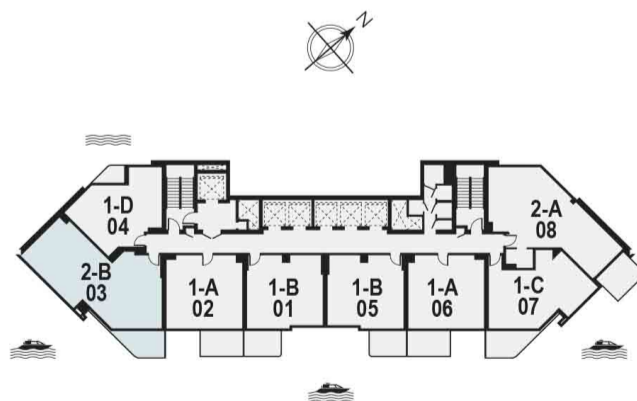
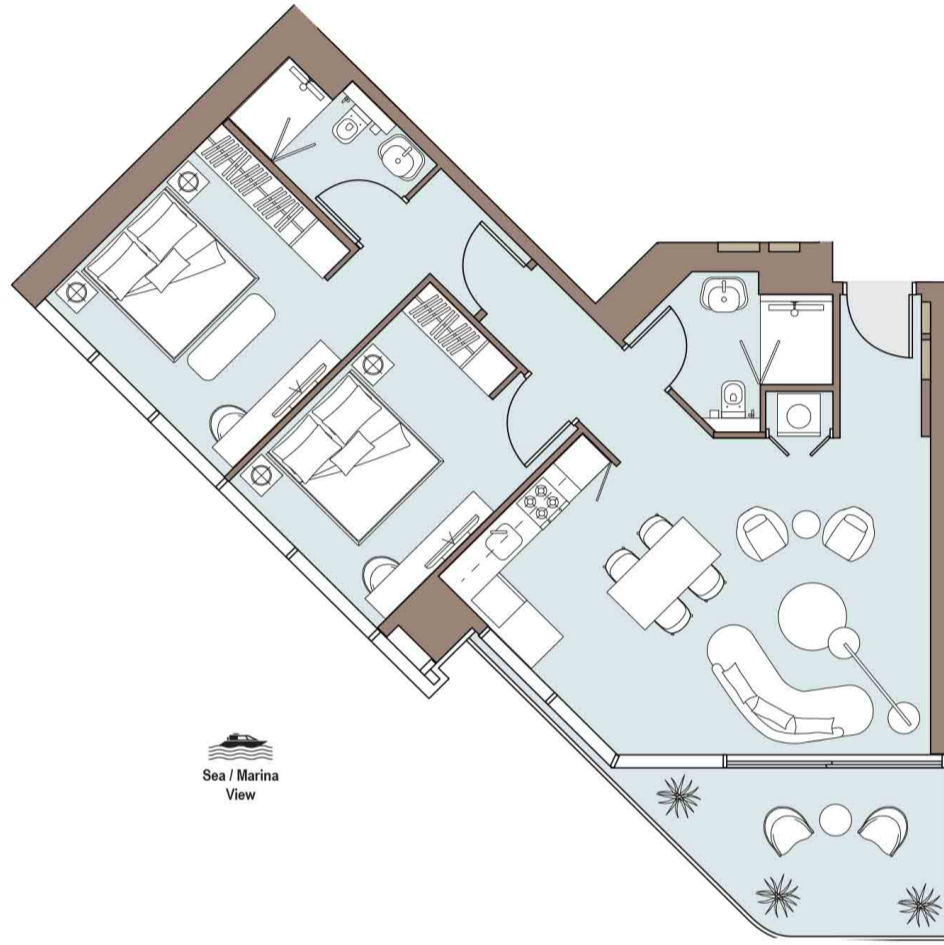


Apartment Area	82.16 m <sup>2</sup>	884 ft <sup>2</sup>
Balcony Area	10.76 m <sup>2</sup>	116 ft <sup>2</sup>
<b>Total Area</b>	<b>92.92 m<sup>2</sup></b>	<b>1,000 ft<sup>2</sup></b>

Drawings are provided by our consultants. All dimensions, features and amenities are approximate at time of printing. Actual size may vary from stated area. Drawings not to scale E & OE. The developer reserves the right to make revisions to the floor plans and any features, materials and dimensions mentioned without further notice.

**TWO BEDROOM**

Tower Two | Type B | Unit 03  
Levels 7 - 24 & 26 - 48

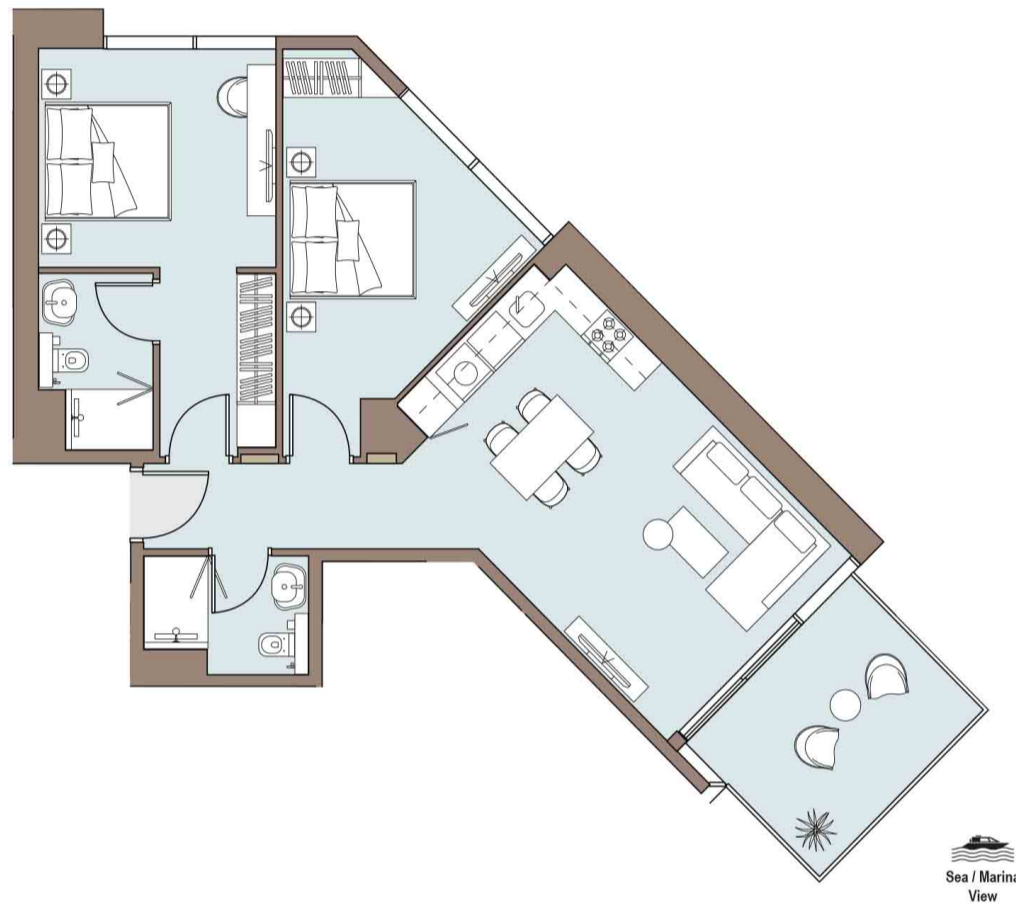


Apartment Area	84.91 m <sup>2</sup>	914 ft <sup>2</sup>
Balcony Area	10.96 m <sup>2</sup>	118 ft <sup>2</sup>
<b>Total Area</b>	<b>95.87 m<sup>2</sup></b>	<b>1,032 ft<sup>2</sup></b>

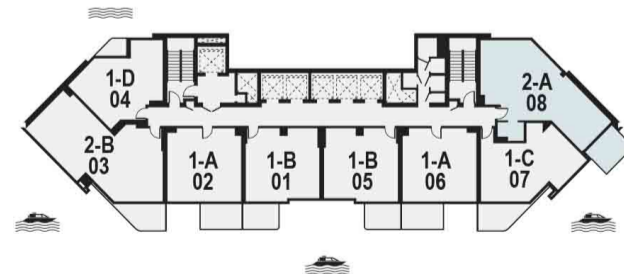
Drawings are provided by our consultants. All dimensions, features and amenities are approximate at time of printing. Actual size may vary from stated area. Drawings not to scale E & OE. The developer reserves the right to make revisions to the floor plans and any features, materials and dimensions mentioned without further notice.

**TWO BEDROOM**

Tower Two | Type A | Unit 08  
Levels 7 - 24 & 26 - 48



Sea / Marina  
View

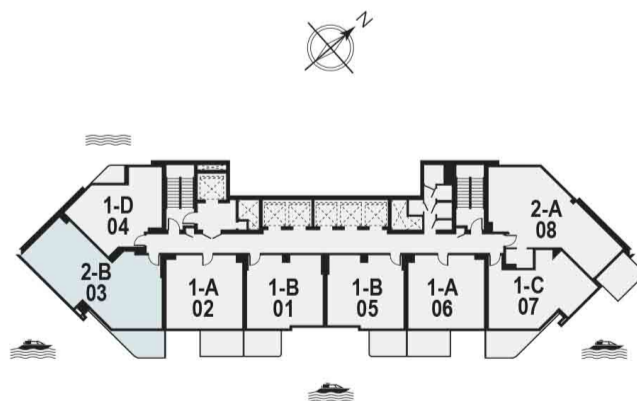
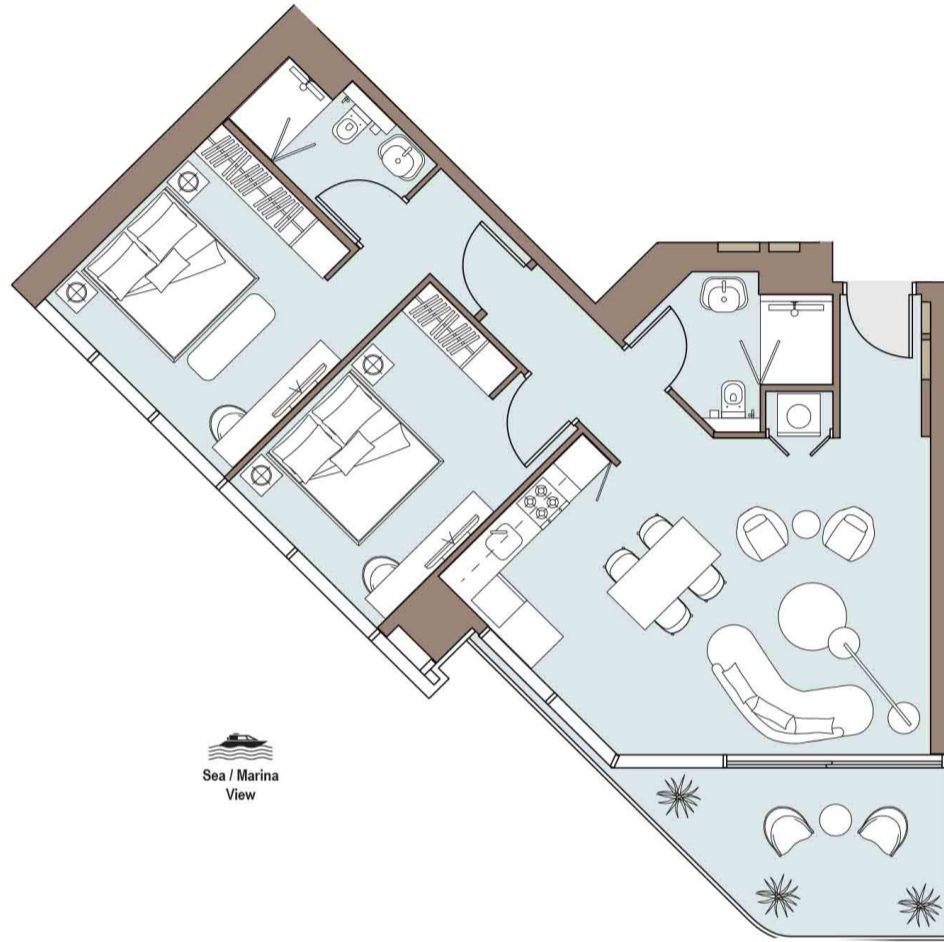


Apartment Area	82.16 m <sup>2</sup>	884 ft <sup>2</sup>
Balcony Area	10.76 m <sup>2</sup>	116 ft <sup>2</sup>
<b>Total Area</b>	<b>92.92 m<sup>2</sup></b>	<b>1,000 ft<sup>2</sup></b>

Drawings are provided by our consultants. All dimensions, features and amenities are approximate at time of printing. Actual size may vary from stated area. Drawings not to scale E & OE. The developer reserves the right to make revisions to the floor plans and any features, materials and dimensions mentioned without further notice.

**TWO BEDROOM**

Tower Two | Type B | Unit 03  
Levels 7 - 24 & 26 - 48

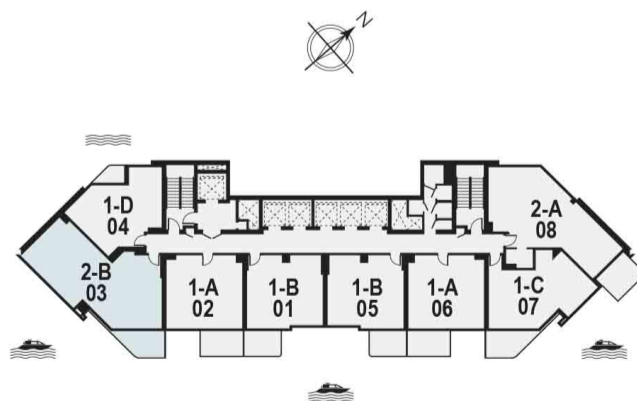
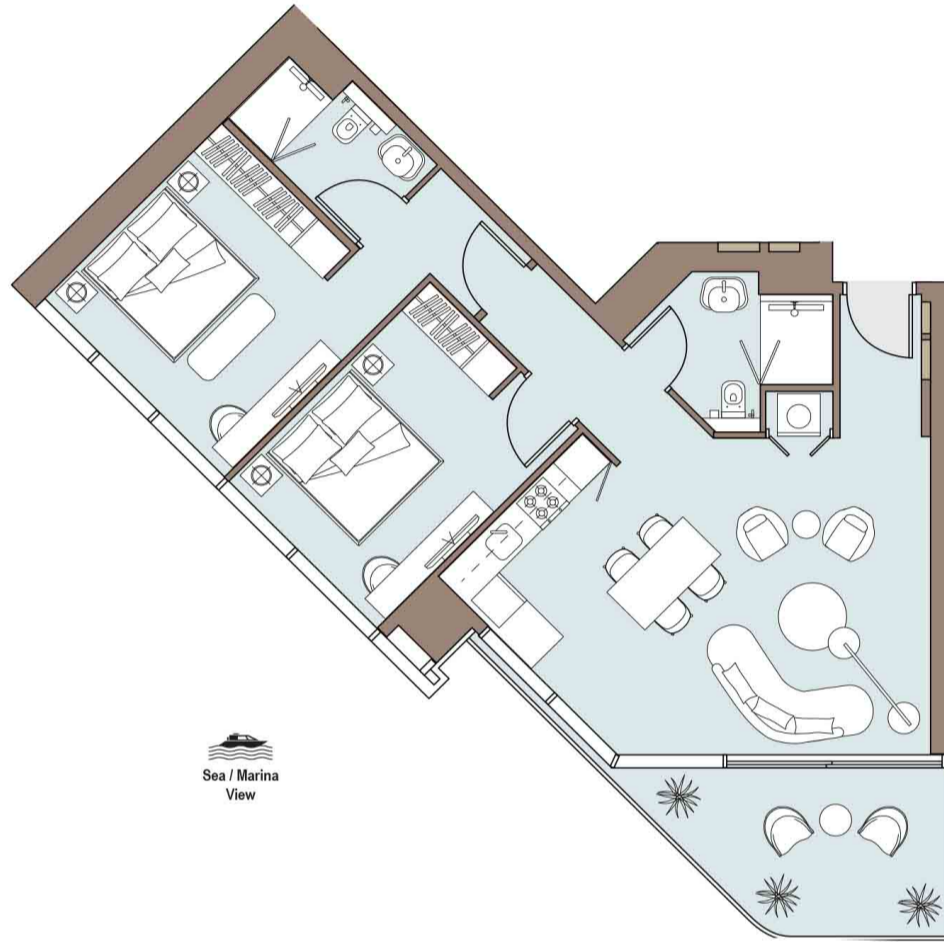


Apartment Area	84.91 m <sup>2</sup>	914 ft <sup>2</sup>
Balcony Area	10.96 m <sup>2</sup>	118 ft <sup>2</sup>
<b>Total Area</b>	<b>95.87 m<sup>2</sup></b>	<b>1,032 ft<sup>2</sup></b>

Drawings are provided by our consultants. All dimensions, features and amenities are approximate at time of printing. Actual size may vary from stated area. Drawings not to scale E & OE. The developer reserves the right to make revisions to the floor plans and any features, materials and dimensions mentioned without further notice.

**TWO BEDROOM**

Tower Two | Type B | Unit 03  
Levels 7 - 24 & 26 - 48

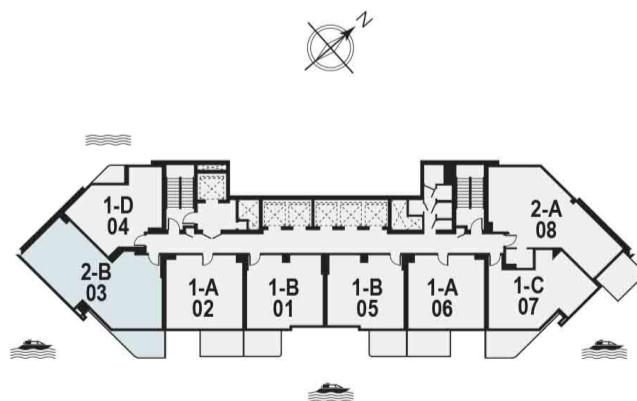
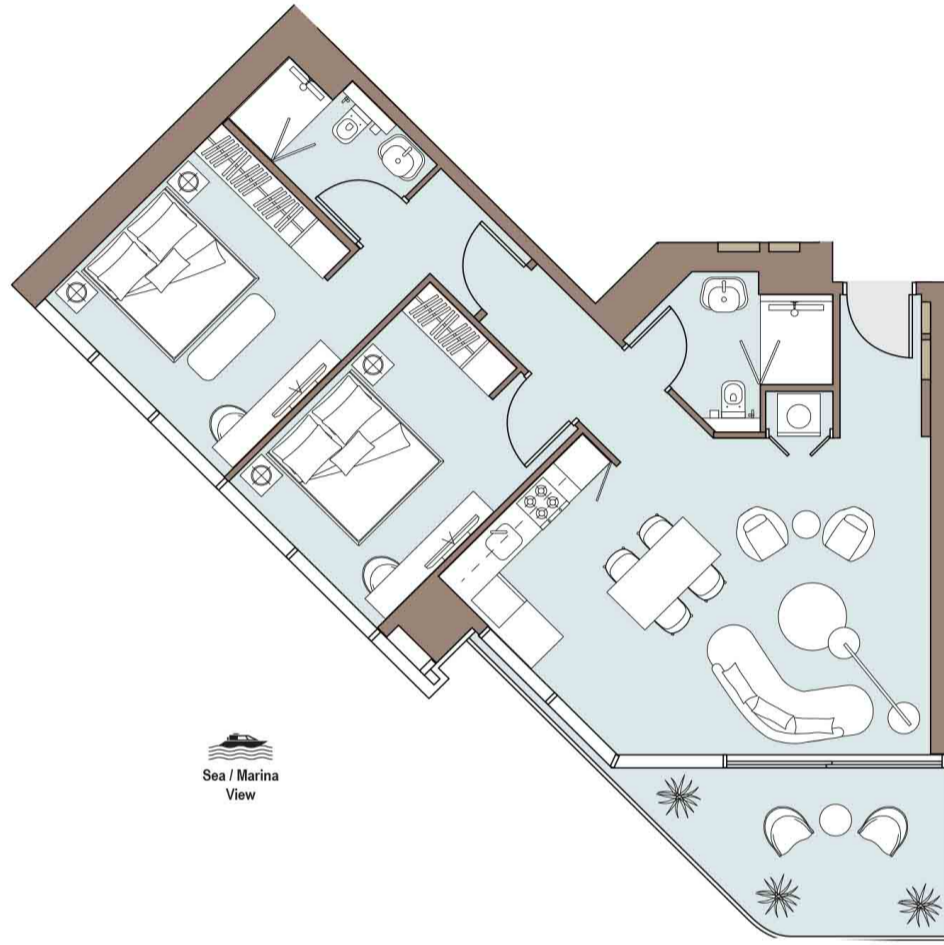


Apartment Area	84.91 m <sup>2</sup>	914 ft <sup>2</sup>
Balcony Area	10.96 m <sup>2</sup>	118 ft <sup>2</sup>
<b>Total Area</b>	<b>95.87 m<sup>2</sup></b>	<b>1,032 ft<sup>2</sup></b>

Drawings are provided by our consultants. All dimensions, features and amenities are approximate at time of printing. Actual size may vary from stated area. Drawings not to scale E & OE. The developer reserves the right to make revisions to the floor plans and any features, materials and dimensions mentioned without further notice.

**TWO BEDROOM**

Tower Two | Type B | Unit 03  
Levels 7 - 24 & 26 - 48

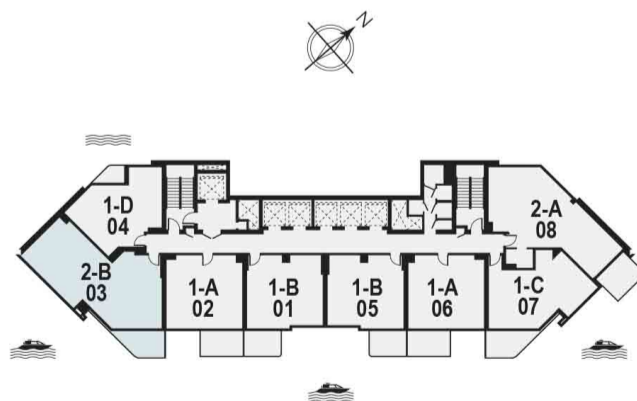
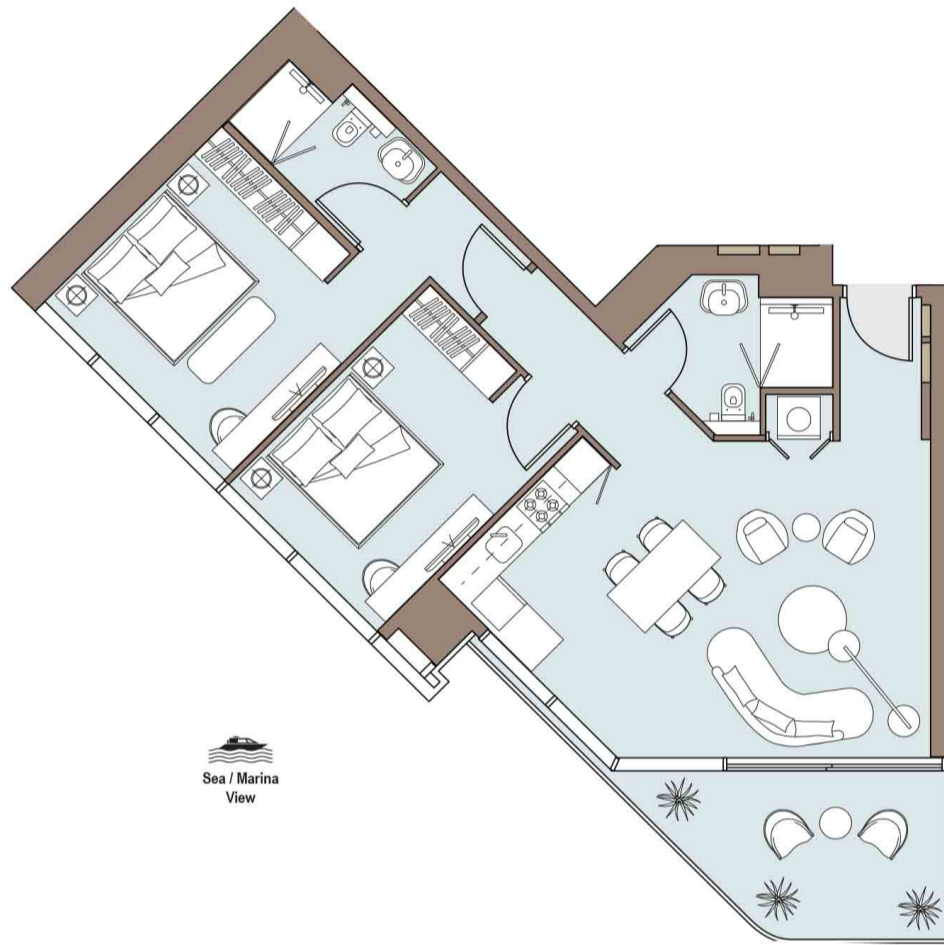


Apartment Area	84.91 m <sup>2</sup>	914 ft <sup>2</sup>
Balcony Area	10.96 m <sup>2</sup>	118 ft <sup>2</sup>
<b>Total Area</b>	<b>95.87 m<sup>2</sup></b>	<b>1,032 ft<sup>2</sup></b>

Drawings are provided by our consultants. All dimensions, features and amenities are approximate at time of printing. Actual size may vary from stated area. Drawings not to scale E & OE. The developer reserves the right to make revisions to the floor plans and any features, materials and dimensions mentioned without further notice.

**TWO BEDROOM**

Tower Two | Type B | Unit 03  
Levels 7 - 24 & 26 - 48



Apartment Area	84.91 m <sup>2</sup>	914 ft <sup>2</sup>
Balcony Area	10.96 m <sup>2</sup>	118 ft <sup>2</sup>
<b>Total Area</b>	<b>95.87 m<sup>2</sup></b>	<b>1,032 ft<sup>2</sup></b>

Drawings are provided by our consultants. All dimensions, features and amenities are approximate at time of printing. Actual size may vary from stated area. Drawings not to scale E & OE. The developer reserves the right to make revisions to the floor plans and any features, materials and dimensions mentioned without further notice.





**TANAMI**  
P R O P E R T I E S

**CONTACT US**

 +971 4 248 3400 |  +971 55 162 3236

Email Us

info@tanamiproperties.ae

For More Info...

[www.tanamiproperties.com/Projects/Nautica-2-by-Select-Group](http://www.tanamiproperties.com/Projects/Nautica-2-by-Select-Group)



**ADDRESS**

Office 3405, Marina Plaza,  
Al Marsa Street, Dubai Marina, UAE